

Old Church Primary School

Supporting Children with Medical

Conditions Policy

Contents

| | |
|--|----|
| Introduction | 3 |
| Policy | 3 |
| Policy implementation | 3 |
| Notification that a pupil has a medical condition | 4 |
| Individual healthcare plans..... | 4 |
| Roles and responsibilities | 5 |
| Staff training and support | 6 |
| The child's role in managing their own medical needs | 7 |
| Managing medicines on school premises..... | 7 |
| Record keeping..... | 8 |
| Emergency procedures | 8 |
| Day trips, residential visits and sporting activities..... | 8 |
| Other issues..... | 9 |
| Unacceptable practice | 9 |
| Liability and indemnity..... | 9 |
| Complaints..... | 9 |
| Appendix 1 – Insurance cover, Decision tree, and RAG rated examples..... | 10 |
| Decision tree..... | 10 |
| Examples of treatment (RAG rated) | 11 |

Introduction

Children and young people with medical conditions are entitled to a full education and have the same rights of admission to school as other children. This means that no child with a medical condition should be denied admission or prevented from taking up a place in school because arrangements for their medical condition have not been made.

This document sets out **Old Church Primary's** policy for supporting pupils with medical conditions. It has the full support of **governors, the Headteacher and all staff**. It will be reviewed regularly and will be made readily available to parents and school staff.

In implementing our policy, we will follow the statutory guidance set out in the Department for Education's document "[Supporting pupils at school with medical conditions](#)".

Policy

We will ensure that pupils with medical conditions, in terms of both physical and mental health, are properly supported so that they have full access to education, including school trips and physical education, and can access and enjoy the same opportunities at school as any other child.

We will ensure that arrangements are in place in school to support pupils with medical conditions. These arrangements should give parents and pupils confidence in our ability to provide effective support for medical conditions in school.

We will consult with our health colleagues, social care professionals, pupils and parents to ensure that the needs of children with medical conditions are effectively supported.

Where children with medical conditions may be considered disabled, we will ensure that we comply with our duties set out in the Equality Act 2010.

Where children with medical conditions have a special educational need (SEN) and have a statement, or Education, Health and Care (EHC) plan we will comply with the [Special educational needs and disability \(SEND\) code of practice](#).

We will ensure that staff are properly trained to provide the support that pupils need.

[Insert signature]

[Insert signature]

Chair of governors: Mrs C. Clift

Headteacher: Ms D. Clacy

[21/9/20]

Policy implementation

Ms Clacy has overall responsibility for implementing this policy implementation.

Ms Clacy is responsible for ensuring that sufficient staff are suitably trained.

Miss Humpage (Inclusion manager) and Miss Thackeray (Medical Needs LSA) will ensure that all relevant staff are made aware of the child's condition, including lunchtime supervisors. Phase leaders will brief relevant supply teachers and PE coaches.

Ms Clacy will ensure that arrangements are in place to cover for staff absence or staff turnover to ensure that someone is always available.

Phase Leaders will ensure that appropriate risk assessments are in place for school visits and other school activities outside of the normal timetable, and that monitoring of individual healthcare plans takes place.

Notification that a pupil has a medical condition

Once we are notified that a pupil has a medical condition, we will ensure that appropriate arrangements (staff training and support) are put in place prior to the start of the relevant school term.

Where pupils have a new diagnosis or join us mid-term we will make every effort to ensure that appropriate arrangements are in place within two weeks.

Where pupils transfer between schools, we will liaise with pupil's previous school to help ensure a smooth transition.

Likewise, where pupils transfer between classes in a setting or when a new teacher starts, liaison will take place to ensure a smooth transition.

Individual healthcare plans

We will liaise with our healthcare colleagues and parents (and if appropriate the pupil) to ensure that, where appropriate, individual healthcare plans are developed to support pupils.

We recognise that responsibility to ensure that healthcare plans are finalised and implemented rests with the school; however, given the input required from health, it has been agreed that our healthcare colleagues will take the lead in writing the plans for children with some specific medical conditions (for example epilepsy, diabetes)

Healthcare plans will be readily accessible to all who need to refer to them, but we will ensure that confidentiality is maintained.

We will ensure that healthcare plans are reviewed at least annually or earlier if evidence is presented that the child's needs have changed.

Healthcare plans will consider some of the following dependent upon medical condition:

- the medical condition, its triggers, signs, symptoms and treatments;
- the pupil's resulting needs, including medication (dose, side effects and storage) and other treatments, time, facilities, equipment, testing, access to food and drink where this is used to manage their condition, dietary requirements and environmental issues e.g. crowded corridors, travel time between lessons;
- specific support for the pupil's educational, social and emotional needs – for example, how absences will be managed, requirements for extra time to complete exams, use of rest periods or additional support in catching up with lessons, counselling sessions;
- the level of support needed (some children will be able to take responsibility for their own health needs) including in emergencies. If a child is self-managing their medication, this should be clearly stated with appropriate arrangements for monitoring;
- who will provide this support, their training needs, expectations of their role and confirmation of proficiency to provide support for the child's medical condition from a healthcare professional; and cover arrangements for when they are unavailable;
- who in the school needs to be aware of the child's condition and the support required;

- arrangements for written permission from parents and the headteacher for medication to be administered by a member of staff, or self-administered by the pupil during school hours;
- separate arrangements or procedures required for school trips or other school activities outside of the normal school timetable that will ensure the child can participate, eg risk assessments;
- where confidentiality issues are raised by the parent/child, the designated individuals to be entrusted with information about the child's condition; and
- what to do in an emergency, including whom to contact, and contingency arrangements. Some children may have an emergency healthcare plan prepared by their lead clinician that could be used to inform development of their individual healthcare plan.

Roles and responsibilities

Supporting a child with a medical condition during school hours is not the sole responsibility of one person. The school's ability to provide effective support often depends on working co-operatively with other agencies. We will ensure that we engage in effective partnership working with healthcare professionals (and, where appropriate, social care professionals), the local authority, parents and pupils.

Key roles and responsibilities are set out below:

The Governing Body has overall responsibility for making sure arrangements to support pupils with medical conditions are in place and that the policy for supporting pupils with medical conditions is developed and implemented. This includes ensuring pupils with medical conditions are supported to enable their full participation in all aspects of school life and ensuring that staff receive suitable training and are competent to support those children.

The headteacher is responsible for the policy and its effective implementation with partners. This includes ensuring that all staff are aware of the policy and understand their role in its implementation.

The **SENCo** will ensure that all staff who need to know are made aware of a child's condition and ensure that sufficient trained numbers of staff are available to implement the policy and deliver against all individual healthcare plans, including in contingency and emergency situations.

The **SENCo and Medical Needs LSA** have overall responsibility for the development of individual healthcare plans and will contact the relevant healthcare professional in the case of any child who has a medical condition that may require support at school, but who has not yet been brought to the attention of the school nurse.

School staff – any member of school staff may be asked to provide support to pupils with medical conditions, including administering medicines, although they cannot be required to do so. Although administering medicines is not part of teachers' professional duties, they should take into account the needs of pupils with medical conditions that they teach.

School staff will receive appropriate training and achieve the necessary level of competency before they take on responsibility to support children with medical conditions. All school staff should know what to do and respond accordingly when they become aware that a pupil with a medical condition needs help.

School nurses – The school nursing service is responsible for notifying the school when a child has been identified as having a medical condition which will require support in school. Wherever possible, they will do this before the child starts at the school.

It is not the role of the school nursing service to ensure that the school is taking appropriate steps to support children with medical conditions, but they may support staff on implementing a child's individual healthcare plan, e.g. by providing advice and possibly training. School nurses can liaise with lead clinicians on appropriate support for the child and associated staff training needs.

The community nursing team can also be a valuable source of advice and support.

Other healthcare professionals, including GPs and paediatricians – should notify the school nurse when a child has been identified as having a medical condition that will require support at school and may provide advice on developing healthcare plans.

Specialist local health teams may be able to provide support for children with particular conditions (e.g. asthma, diabetes, epilepsy).

Pupils – with medical conditions are often best placed to provide information about how their condition affects them and, wherever possible, will be fully involved in discussions about their medical support needs. They will also be asked to contribute as much as possible to the development of their individual healthcare plan.

Parents and carers – are asked to provide the school with sufficient and up-to-date information about their child's medical needs. In some cases they will be the first to notify the school that their child has a medical condition. Parents are key partners and will be involved in the development and review of their child's individual healthcare plan. Parents are requested to carry out any action they have agreed to as part of its implementation, e.g. provide medicines and equipment and ensure they or another nominated adult are contactable at all times.

The local authority – is the commissioner of school nurses for maintained schools and academies. Under Section 10 of the Children Act 2004, local authorities have a duty to promote co-operation between relevant partners such as governing bodies of maintained schools, proprietors of academies, clinical commissioning groups and NHS England, with a view to improving the wellbeing of children with regard to their physical and mental health, and their education, training and recreation.

The local authority will provide support, advice and guidance, including suitable training for school staff, to ensure that the support specified within individual healthcare plans can be delivered effectively.




Others – the DfE guidance makes it clear that other health colleagues have a role to co-operate with schools and the local authority in supporting children with medical conditions. The guidance also notes that Ofsted will expect schools to have effective policies in place (see First Aid policy and Asthma policy).

Staff training and support

Any member of school staff providing support to a pupil with medical needs will receive suitable training, appropriate to the individual healthcare plans of children they support.

Staff must not give prescription medicines or undertake healthcare procedures without appropriate training. However, in some cases, written instructions from the parent or on the medication container dispensed by the pharmacist may be considered sufficient.

In liaison with health colleagues, we have identified three levels of support and associated training, identified by a traffic light system:

| | |
|---|---|
|  | Green – basic training to allow straightforward support, e.g. giving out medication, asthma support, EpiPen, etc |
|  | Amber – more specialist, bespoke, training for pupils with complex needs. Usually for pupils in special schools, but increasing required in mainstream settings |
|  | Red – care that has to be delivered by trained medical staff |

The school nursing service will facilitate training to school staff. A programme of basic (Green level) training is offered on a regular basis, at a central venue, and advertised to local schools. Attendance certificates will be issued. The school will ensure that an appropriate number of staff attend this training and key points will be shared with all appropriate colleagues.

We will liaise with the school nursing service to ensure that, where necessary to support a child's individual healthcare plan, bespoke (Amber level) training is given to staff.

All training will be refreshed at least every three years; however, there will be an elective yearly refresher for any staff who feel they need more frequent updates.

The child's role in managing their own medical needs

After discussion with parents, children who are competent will be encouraged to take responsibility for managing their own medicines and procedures. This will be reflected within individual healthcare plans.

Wherever possible, children will be allowed to carry their own medicines and relevant devices or will be able to access their medicines for self-medication quickly and easily. Children who can take their medicines themselves or manage procedures may require an appropriate level of supervision. If it is not appropriate for a child to self-manage, then relevant staff will help to administer medicines and manage procedures for them.

Managing medicines on school premises

The school's policy on medicines in school is:

- Medicines will only be administered at school when it would be detrimental to a child's health or school attendance not to do so.
- No child under 16 will be given prescription or non-prescription medicines without their parent's written consent – except in exceptional circumstances where the medicine has been prescribed to the child without the knowledge of the parents. In such cases, every effort will be made to encourage the child or young person to involve their parents while respecting their right to confidentiality.
- Children under 16 will not be given medicine containing aspirin unless prescribed by a doctor. Medication, e.g. for pain relief, will never be administered without first checking maximum dosages and when the previous dose was taken. Parents will be informed.

- The school will only accept prescribed medicines that are in-date, labelled, provided in the original container as dispensed by a pharmacist and include instructions for administration, dosage and storage. The exception to this is insulin which must still be in date, but is generally inside an insulin pen or a pump, rather than in its original container.
- All medicines will be stored safely. Children will be told where their medicines are at all times and will be able to access them immediately. Where relevant, they will be told who has the key to the storage facility.
- Medicines and devices such as asthma inhalers, blood glucose testing meters and adrenaline pens will always be readily available to children and not locked away. This is particularly important when outside of school premises, e.g. on school trips.
- Where a child has been prescribed a controlled drug, they may legally have it in their possession if they are competent to do so; however, it will be made clear to them that passing it to another child for use is an offence. Monitoring arrangements will be put in place as appropriate. Otherwise, controlled drugs that have been prescribed for a pupil will be securely stored and only named staff will have access to them; albeit they will be kept easily accessible in an emergency. A record will be kept of any doses used and the amount of the controlled drug held in school.
- School staff may administer a controlled drug to the child for whom it has been prescribed. Staff administering medicines will do so in accordance with the prescriber's instructions. A record of all medicines administered to individual children will be kept, stating what, how and how much was administered, when and by whom. Any side effects of the medication administered will be noted.
- When no longer required, medicines will be returned to the parent to arrange for safe disposal. Sharps boxes will always be used for the disposal of needles and other sharps.

Record keeping

The school will ensure that written records are kept of all medicines administered or clinical procedures carried out to children. Parents will be informed if their child has been unwell at school.

Emergency procedures

We will have a risk management processes and arrangements in place for dealing with emergencies for all school activities wherever they take place, including on school trips.

Where a child has an individual healthcare plan, it should clearly define what constitutes an emergency and explain what to do, including ensuring that all relevant staff are aware of emergency symptoms and procedures. Other pupils in the school will, if appropriate, be made aware of what to do in general terms, such as informing a teacher immediately if they think help is needed.

If a child needs to be taken to hospital, staff will stay with the child until the parent arrives, or accompany a child taken to hospital by ambulance.

Day trips, residential visits and sporting activities

We will actively support pupils with medical conditions to participate in school trips and visits, or in sporting activities, and make reasonable adjustments to allow them to take part. Pupils will always be included; unless evidence from a clinician such as a GP states that this is not possible.

Our planning arrangements will take account of any adjustments needed to ensure that pupils with medical conditions are included. This requires consultation with parents and pupils and advice from relevant healthcare professional to ensure that pupils can participate safely.

Other issues

With regard to **home-to-school transport**, where appropriate, transport healthcare plans will be put in place for pupils with life-threatening conditions.

With regard to **asthma inhalers** held for emergency use we will hold emergency inhalers in school. We will ensure that staff are trained in use of the inhalers and will follow the Department of Health protocol on their storage and use.

Unacceptable practice

The school's policy is explicit about what practice is not acceptable. Although staff will use their discretion and judge each case on its merits with reference to the child's individual healthcare plan, it is not generally acceptable practice to:

- prevent children from easily accessing their inhalers and medication and administering their medication when and where necessary;
- assume that every child with the same condition requires the same treatment;
- ignore the views of the child or their parents; or ignore medical evidence or opinion (although this may be challenged);
- send children with medical conditions home frequently or prevent them from staying for normal school activities, including lunch, unless this is specified in their individual healthcare plans;
- if the child becomes ill, send them to the school office or medical room unaccompanied or with someone unsuitable;
- penalise children for their attendance record if their absences are related to their medical condition, e.g. hospital appointments;
- prevent pupils from drinking, eating or taking toilet or other breaks whenever they need to in order to manage their medical condition effectively;
- require parents, or otherwise make them feel obliged, to attend school to administer medication or provide medical support to their child, including with toileting issues. No parent should have to give up working because the school is failing to support their child's medical needs; or
- prevent children from participating, or create unnecessary barriers to children participating in any aspect of school life, including school trips, e.g. by requiring parents to accompany the child.

Liability and indemnity

Staff are assured that when providing support to pupils with medical conditions, they are covered by the school's insurance.

Complaints

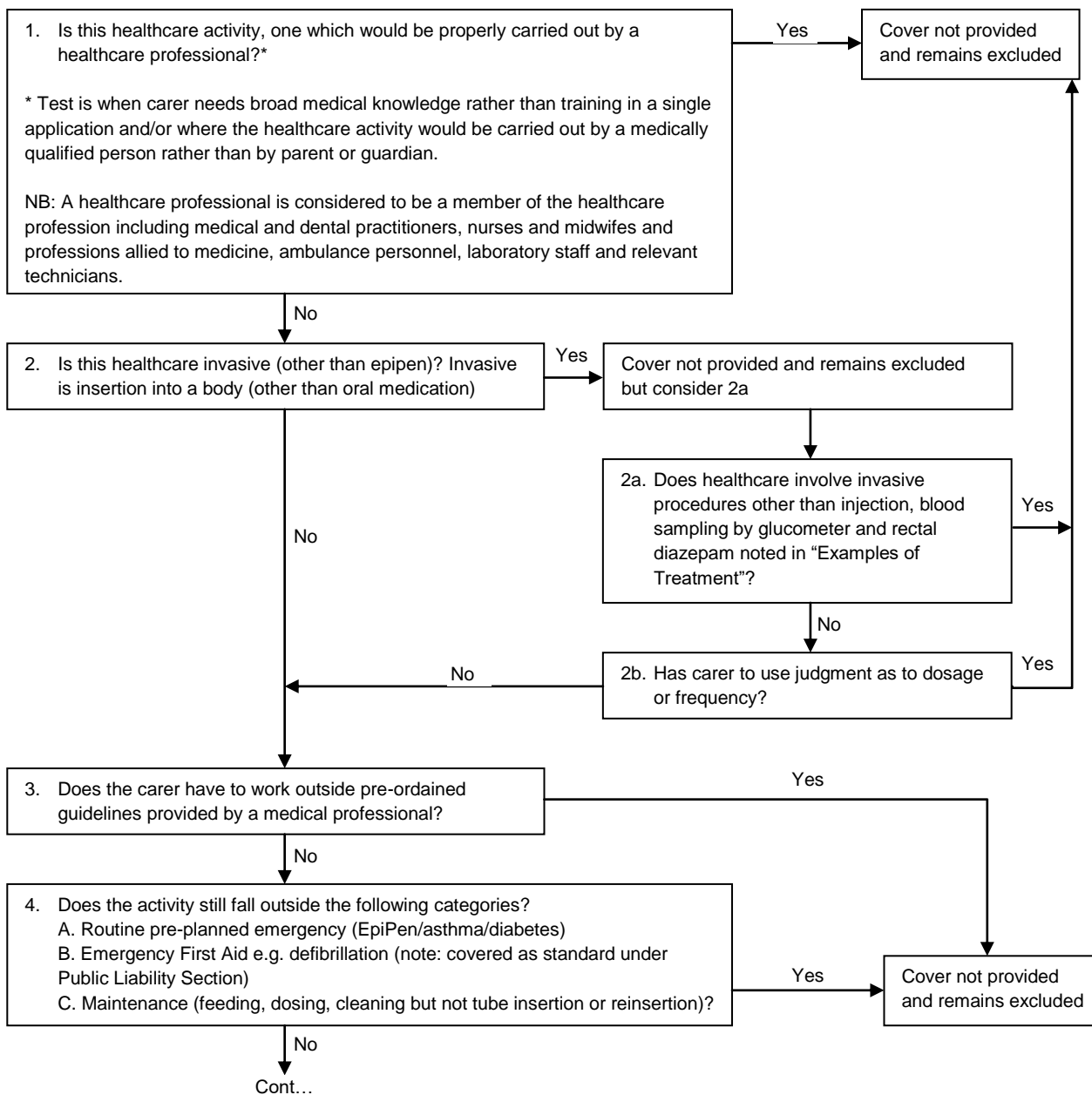
Any complaints regarding the school's support to pupils with medical conditions should be made in the first instance to the headteacher. If for whatever reason this does not resolve the issue, parents and pupils may make a formal complaint via the school's complaints procedure.

Appendix 1 – Insurance cover, Decision tree, and RAG rated examples

Public Liability insurance doesn't normally cover medical malpractice. However, our insurers recognise that in delivering services to clients some of our staff will occasionally be asked to carry out tasks previously considered the remit of the 'medical/healthcare professional'. Our Public Liability has therefore been extended to cover a range of treatments given by staff (usually by carers and teachers who are not medical/healthcare professionals i.e. not doctors, nurses, physiotherapists, etc).

It must be stressed that our insurance cover does not extend to treatments that would be properly carried out by a healthcare professional. The following decision tree should help clarify which treatments are covered. In addition, the RAG rated examples of treatments should cover most scenarios encountered in school and other council settings.

Decision tree



Cover can be provided subject to:

- A. Healthcare activity task is detailed in a Health Care Plan (See oral medication for day schools and residential establishments)
- B. The healthcare activity(ies) have been agreed in writing by insurer
- C. The Health Care plan has been drawn up by a health care professional
- D. The Health Care Plan details the level of training/competency required for the healthcare activity
- E. Training of the carer is documented, and competency assessed as detailed in the Health Care Plan
- F. The underwriter is comfortable that the entity has audited risk management procedures in place.
- G. For medical monitoring activities, the Health Care Plan states the acceptable parameters and that outside of these a medical professional should be contacted, the urgency of which should be stated.

Note: The Local Authority must still consider whether the purchase of standalone medical malpractice policy is required.

Examples of treatment (RAG rated)

| Procedure | Description | Acceptable to Underwriters | RAG (Standard CP) |
|--------------------------------------|--|---|-------------------|
| Anal Plugs | Plug to prevent bowel movements in incontinent adults or children. | No | |
| Bathing | | Yes - following training and subject to routine visits to service users by senior officer to check for abuse Safe Manual Handling Practice to be followed | |
| Bladder wash out | | No | |
| Blood Pressure | Taking of BP by automated machine only | Yes – following training and variation from specified limits in Health Care Plan referred to medical staff | SCP |
| Blood Samples | Glucometer or fingerprick only | Yes – following written Health Care Plan and adherence to manufacturers' guidelines | |
| Body fluid balance monitoring | Measurement and recording of fluids in and urine out via toilet capture device | Yes – following training and referral of abnormalities to medical staff | SCP |
| Breathing monitoring | Visual monitoring | Yes – as routine check only | SCP |
| | Monitoring by machine | Yes – following written Health Care Plan | SCP |
| Buccal medazolam | Administered by mouth | Yes – following written Health Care Plan | |
| Catheters | Change bags and cleaning of tube | Yes – following written Health Care Plan | |
| | Insertion of tube | No | |
| Colostomy/Stoma care | Change bags | Yes – following written Health Care Plan | |
| | Cleaning | Yes – following written Health Care Plan | |
| Contact lens fitting | Insertion of contact lenses | No | |
| Defibrillators/First aid only | In emergency | Yes – following written Health Care Plan | SCP |
| Denture cleansing | | Yes – following appropriate training and using proprietary cleaner only | |
| Dressing care (external) | Application | Yes – following written Health Care Plan | |
| | Replacement | Yes – following written Health Care Plan | |
| Ear Syringe | | No | |
| Ear/nose drops | | Yes | |
| Enema suppositories | | No | |
| Eye care | For individuals unable to close eyes | Yes – following written Health Care Plan | SCP |
| Eye drops | | Yes | |
| First Aid | In emergency (including use of defibrillators) | Yes – by employees with valid first aid certificate | |

| Procedure | Description | Acceptable to Underwriters | RAG (Standard CP) |
|--|--|---|-------------------|
| Gastrostomy tube Peg feeding (Through the abdominal wall) | A tube to be inserted | Yes – by qualified medical staff only | |
| | Feeding and cleaning | Yes – following written Health Care Plan | |
| | Reinsertion of gastrostomy tube Testing | No – by qualified medical staff only | |
| Gastrostomy tube Peg feeding with medication | | Yes – following written Health Care Plan and in consultation with pharmacist, and prescribed by a medical professional | |
| Gastrostomy tube Bolus feed via a gastrostomy tube | Using a large syringe or feed bag to provide 'bulk' feed | Yes – following written Health Care Plan | |
| Gastrostomy tube Pump feeds via a gastrostomy | Pumps are usually used to provide a constant feed – say through the night | Yes – following written Health Care Plan | |
| Hearing aids | Checking | Yes – following written Health Care Plan | SCP |
| | Fitting (but not measuring for a hearing aid) | Yes – following written Health Care Plan | SCP |
| | Replacement (but not measuring for a hearing aid) | Yes – following written Health Care Plan | SCP |
| Inhalers and nebulisers | Provide assistance to user – both hand held and mechanical | Yes – following written Health Care Plan | SCP |
| Injections | Assembling syringes and administering intravenously or controlled drugs | No | |
| | Pre packaged doses administered on a regular basis* | Yes – see medipens below | |
| | Carer using judgment to determine frequency and dosage | No | |
| Manual evacuation | Of the bowel | No | |
| Medipens (Epipens & Anapens) | For anaphylactic shock (intramuscular) with a preassembled pre-dose loaded epipen epinephrine or adrenaline/epinephrine. | Yes – following written Health Care Plan | SCP |
| Mouth toilet | For individuals unable to swallow | Yes | |
| Nasal Suction | Clearing of the nose via a fitted tube or stent | Yes – following written Health Care Plan. Excluding insertion of tube or stent | |
| Naso-gastric tube feeding | Tube to be inserted. Carers and staff will be trained on an individual basis for individual child/young person/adult. | No - by qualified acute sector medical staff only so that the tube can be scanned to check for correct insertion. | |
| | Feeding and cleaning of tube | Yes – following written Health Care Plan | |
| | Reinsertion Testing | No - by qualified acute sector medical staff only so that the tube can be scanned to check for correct insertion | |
| Naso-gastric tube Bolus nasogastric feeds | This is where a syringe is used to provide a bulk feed | Yes – following written Health Care Plan | |
| Occupational therapy | Progress assessment for goals set by professional physiotherapist for gait patterns etc. | Yes – following written Health Care Plan assessment of competency and referral to physiotherapist if goals not being met | |
| | Self-Care Assessments - Assessment of capability of service user to live independently in their own home, mobility, use of stairs etc. | Yes – excluding any physical or medical treatment or supervision of any treatment regime | |
| | Other | No | |
| Oral medication – prescribed | Antibiotic syrup, tablets etc | Yes - as prescribed and directed by a medical professional following written Health Care Plan (refer to additional notes below) | |
| Oral suction | To remove excess secretions from the upper respiratory tract for individuals | No | |

| Procedure | Description | Acceptable to Underwriters | RAG (Standard CP) |
|---|---|--|-------------------|
| | who are unable to do so independently | | |
| Oxygen – administration of | Provide assistance to user | Yes – following written Health Care Plan | |
| Pessaries | | No | |
| Physiotherapy | | No – other than postural or chest drainage, limb massaging, exercise therapy under the direction of a physiotherapist and documented in a Health Care Plan | |
| Postural drainage exercise | Drainage exercises for individuals with e.g. cystic fibrosis | Yes – following written Health Care Plan provided under the direction of a physiotherapist | |
| | Chest drainage involving insertion of tube into lungs | No | |
| Pressure bandages | Application to assist with positioning of digits | Yes – following written Health Care Plan | |
| Pulse rate | Finger pressure on wrist only | Yes – following training and variation from specified limits in Health Care Plan referred to medical staff | SCP |
| Rectal midazolam prepackaged dose | Tends to be used for individuals suffering from repeated epileptic fits | Yes – following written Health Care Plan and 2 members of staff must be present | |
| | Emergency situation | Yes – following written Health Care Plan and 2 members of staff must be present | |
| Rectal diazepam in prepackaged dose | Tends to be used for individuals suffering from repeated epileptic fits Routine administration | Yes – following written Health Care Plan and 2 members of staff must be present | |
| | emergency situation | Yes – following written Health Care Plan and 2 members of staff must be present | |
| Rectal Paraldehyde | Used for individuals suffering from repeated epileptic fits- and cannot use other forms of medication Routine and emergency – needs to be applied by catheter- highly skilled application/ and drug storage | No | |
| Splints, braces, corsets etc | Application of appliances | Yes – as directed by a medical professional | |
| Syringe drivers- Programming of | | No | |
| Suppositories or pessaries Inserting with a prepackaged doses | | No – other than Rectal diazepam and midazolam. See above | |
| Swabs | External (cleansing of the skin and inside mouth/ nose and taking of swabs of external wounds for analysis) | Yes | |
| | Internal(other than oral) invasive | No | |
| Temperature taking | Via ear only | Yes – following training and variation from specified limits in Health Care Plan referred to medical staff | SCP |
| Toe nail cutting | | No Yes – if the patient has diabetes or vascular disease a chiropodist should do this. | |
| Topical medication and application of patches | Pre-prescribed medication only -Creams lotions etc | Yes – following training and written Health Care Plan and as prescribed and directed by a medical professional. Excluding 1st application of patches. | SCP |
| Tracheostomy care | Clean round edge of tube only | Yes – following written Health Care Plan | |

| Procedure | Description | Acceptable to Underwriters | RAG (Standard CP) |
|---------------------|------------------------------|--|-------------------|
| | Replacement, suction | No | |
| | Emergency: | No | |
| Ventilators | Use of | Yes – following written Health Care Plan | |
| Venepuncture | A method of collecting blood | No | |

Note: if you need to undertake any treatments with a Red RAG rating, you should contact Risk and Insurance to discuss what the treatment involves – it might be that, in some circumstances, our insurers are able to cover the treatment.

Local Authority Education

Day Schools only (not residential)

| | | | |
|--|---|--|---|
| Oral medication - prescribed | Antibiotic syrup, tablets etc | Yes as prescribed and directed by a health care professional (i.e. Doctor) <ul style="list-style-type: none"> • Adherence to Authorities Medication Policy • Parental consent form completed | Health Care Plans required for the administration of oral medication over a period of 8 days or more |
| Oral medication as directed and authorized by a parent/Guardian | Paracetamol, antihistamine (i.e. for hay fever etc) | Yes : <ul style="list-style-type: none"> • Adherence to Authorities Medication Policy • Parental consent form completed | Health Care Plans required for the administration of oral medication is over a period of 8 days or more |

Residential establishments

| | | | |
|-------------------------------------|-------------------------------|--|--|
| Oral medication - prescribed | Antibiotic syrup, tablets etc | Yes as prescribed and directed by a health care professional (i.e. Doctor) Adherence to Authorities Medication Policy | Health Care Plans must be amended to include reference to the oral medication if administration is required for a period of 8 days or more * |
|-------------------------------------|-------------------------------|--|--|